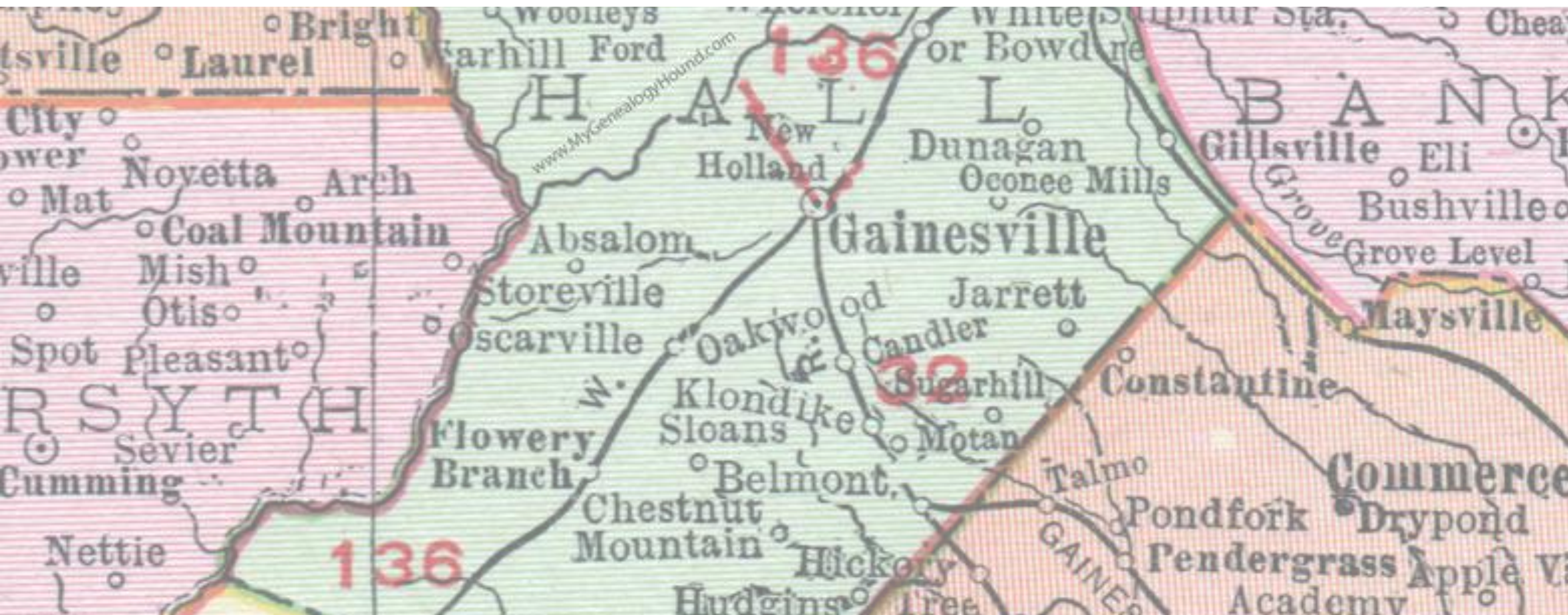


ESPLOST VII COMMUNITY INFORMATION MEETING

CAST YOUR VOTE ON MAY 19, 2026

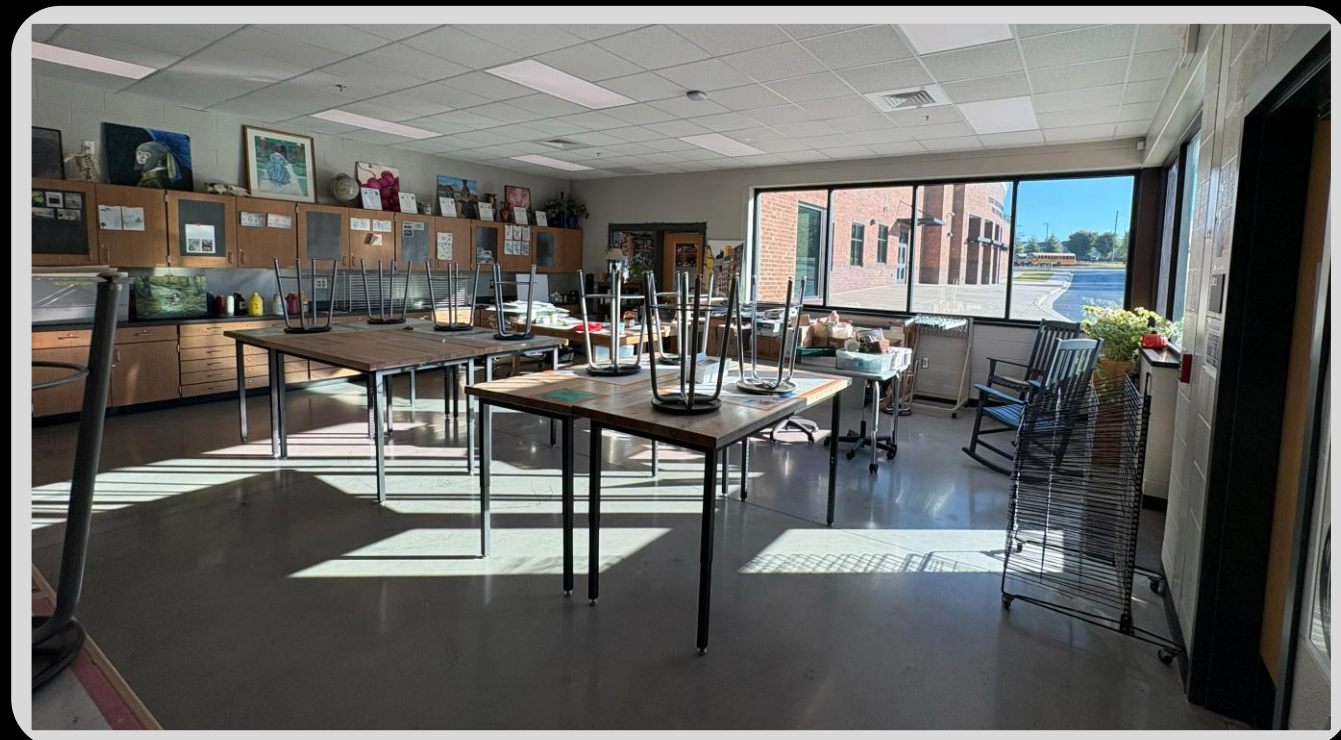


esplost.hallco.org

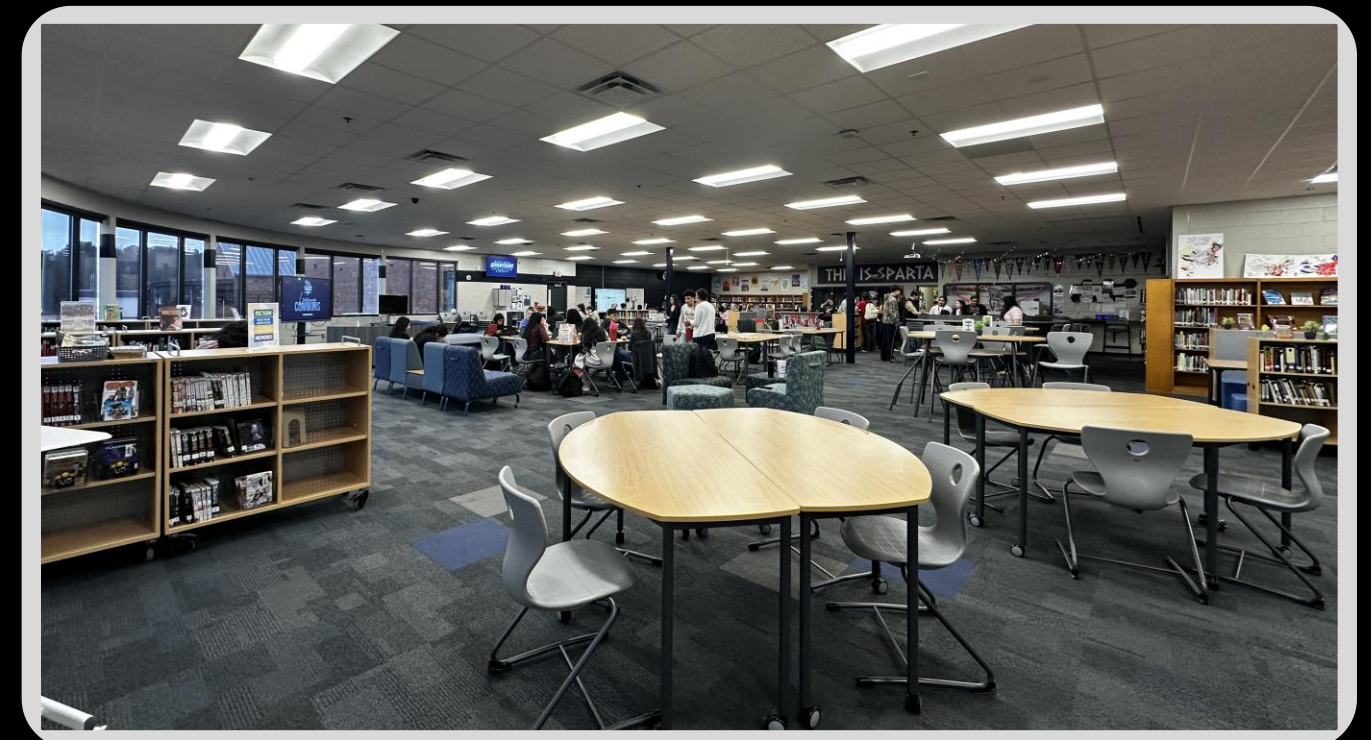


a los votantes que prorroguen el impuesto

REFLECTING ON THE PAST DECADE



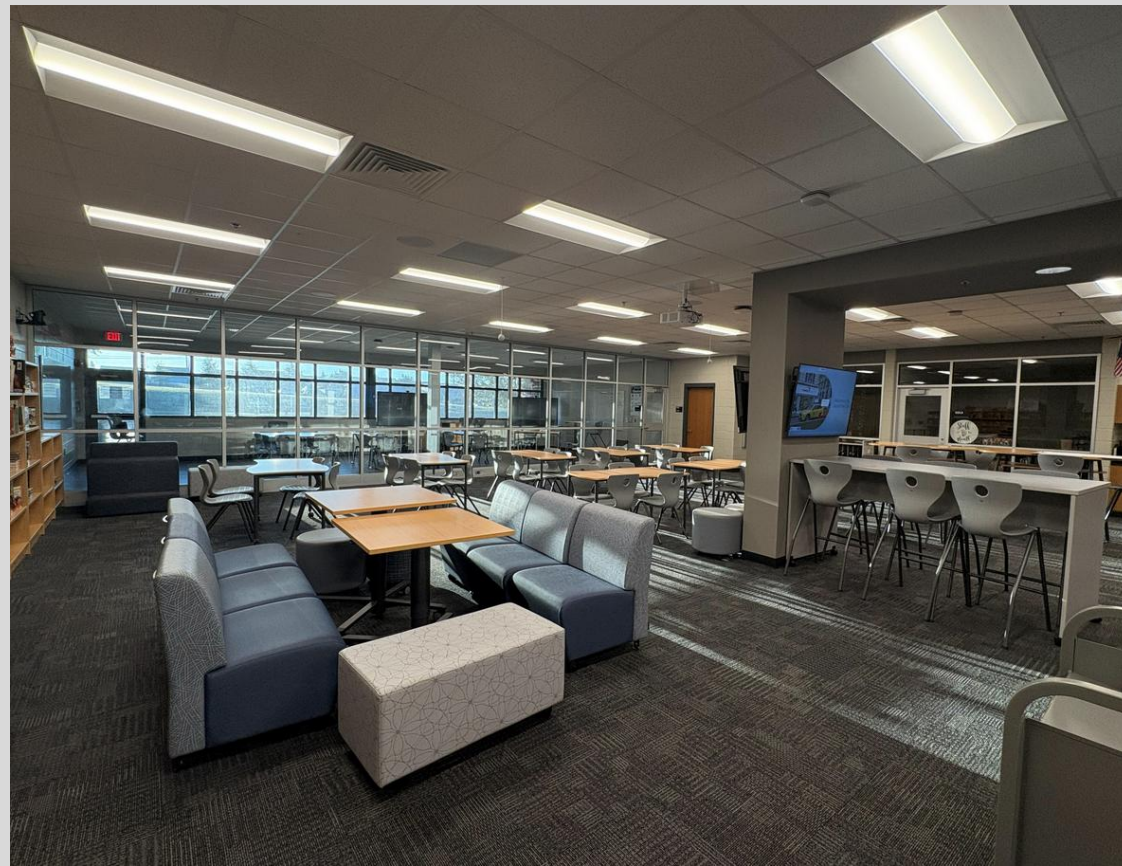
- ESPLOST has touched every Hall County school.
- Replaced aging buildings, modernized learning spaces.
- Investments across elementary, middle, and high schools.





A DECADE IN REVIEW: *10 YEARS OF GROWTH & IMPACT*

- Constructed, renovated, and improved instructional and support spaces at every Hall County School
- Replaced 5 schools with 3 new schools
- Improved athletic facilities at every Hall County School
- Constructed four performing arts centers
- Enhanced security and safety at all Hall County Schools
- Provided technology infrastructure and devices to support student achievement
- Purchased school buses to transport students
- Renovated and enhanced CTAE programs at every Hall County Middle and High School



LEARNING ENVIRONMENTS

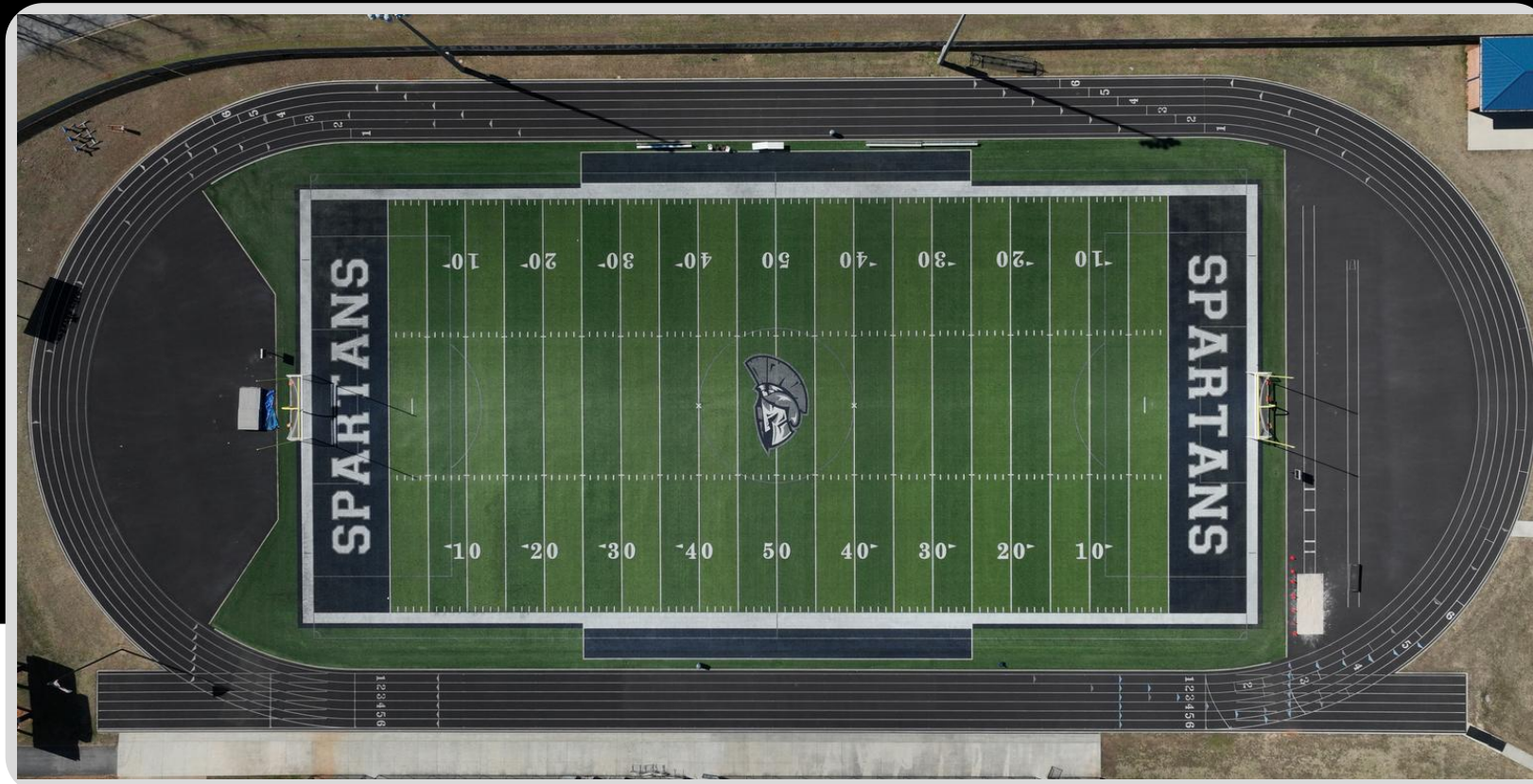
- Emphasis on modern, flexible learning spaces.
- Learning commons, labs, fine arts, and CTAE upgrades.
- Designed to support collaboration and real-world learning.

Enhanced Student/Stakeholder Experience

- Emphasis on modern, flexible learning spaces.
- Learning commons, labs, fine arts, and CTAE upgrades.



- Designed to support collaboration and real-world learning.



SAFETY, INFRASTRUCTURE, AND COMMUNICATIONS



- Major focus on safety, security, and reliability.

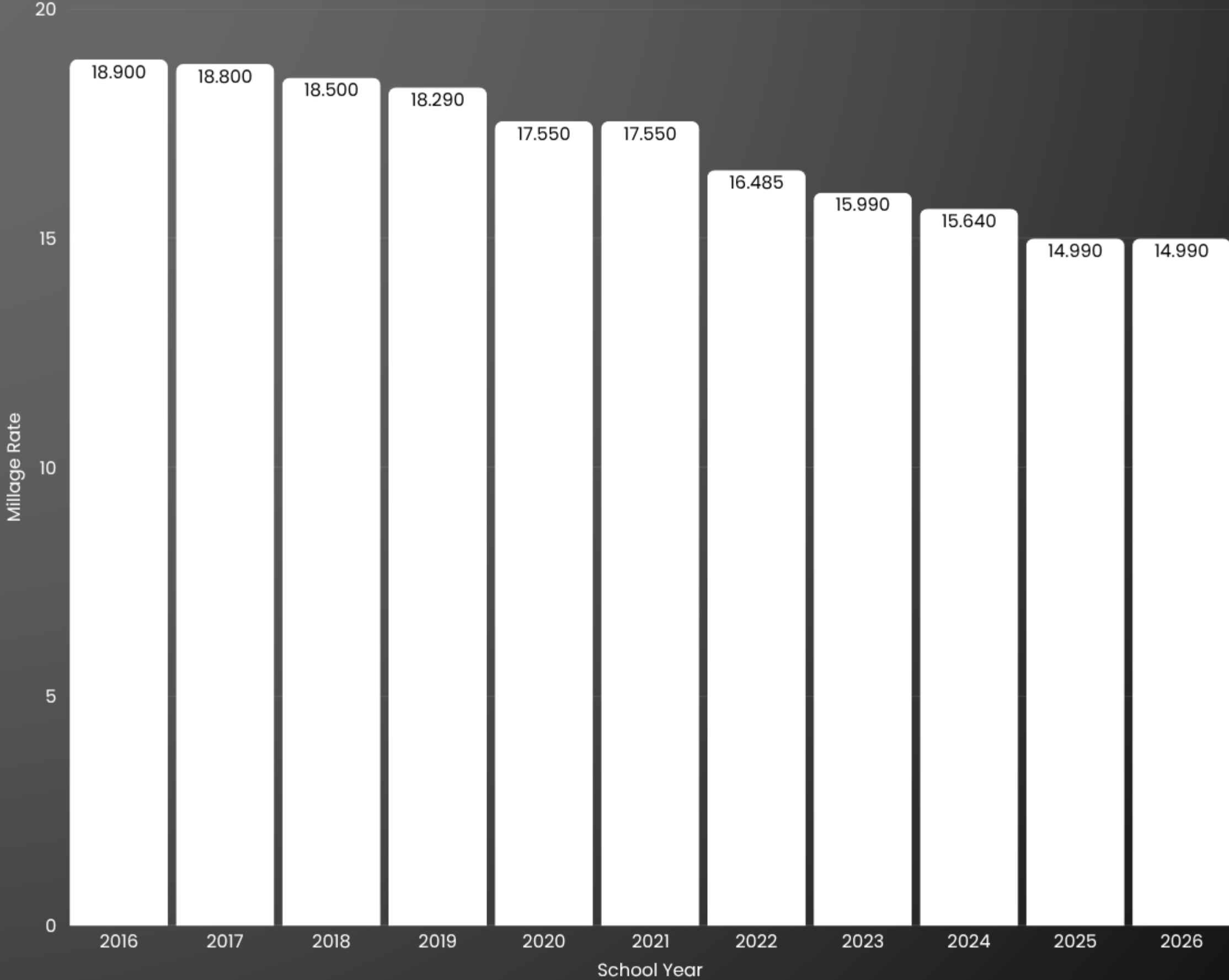


- Roofs, HVAC, fire alarms, communication systems.



- Investments that keep schools functional and safe.

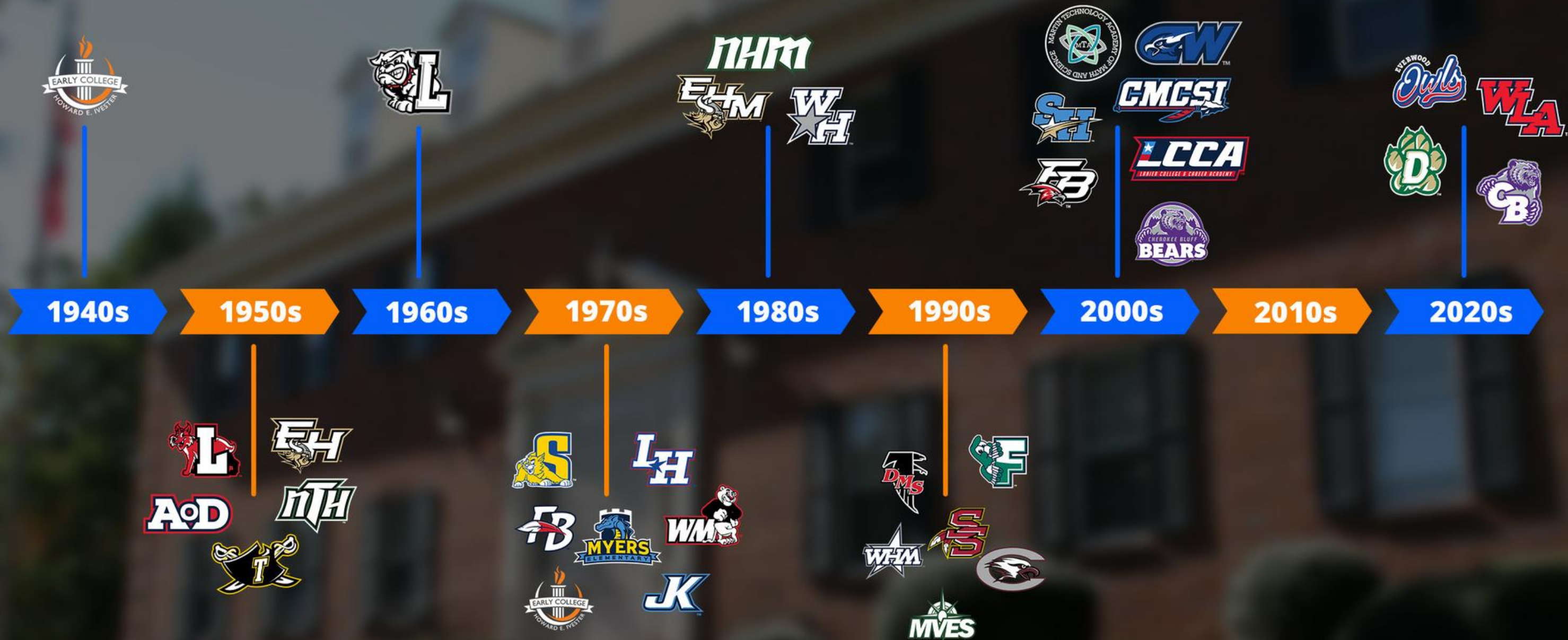
Hall County Millage Rates



FISCAL RESPONSIBILITY

- Voter-approved penny sales tax.
- No property tax increase.
- Careful planning, transparency, accountability.

AGE OF INSTRUCTIONAL FACILITIES



 **Character Competency**
Rigor FOR ALL

Looking Ahead

- Managing growth and aging facilities.
- Continued modernization of instructional spaces to accommodate student learning needs.
- Staying proactive, not reactive.



NEXT DECADE PRIORITIES

- Facility maintenance and replacements.
- Technology upgrades.
- Safety enhancements.
- Support for instructional programs and transportation.



ACCOMMODATE GROWTH AND AGING INSTRUCTIONAL SPACES

- Classroom renovations, additions, and replacements
- Roof replacements
- HVAC replacements
- Gymnasium, activity field, and stadium improvements
- Improvements at high school theaters
- Update CTAE instructional spaces
- Parking lot improvements
- Elementary playground enhancements
- Land acquisition





SAFETY ENHANCEMENTS

DEBT SERVICE TECHNOLOGY

- Replace student Chromebooks, CTAE lab hardware, and teacher laptops
- Replace classroom and office phone systems
- Replace intercom systems
- Replace and enhance technology infrastructure
- Replace Classroom AV systems

SUPPORT FOR INSTRUCTIONAL PROGRAMS

- Purchase large band equipment
- Purchase library collections

PURCHASE SCHOOL BUSES

Future Projects

Chicopee Woods

- Restroom renovations throughout school
- Classroom renovations
 - LVT flooring
 - Casework replacement

Flowery Branch Elementary

- Car rider and bus drive improvements
- Classroom renovations
 - LVT flooring
 - Casework replacement

Friendship

- Classroom renovations
 - LVT flooring
 - Casework replacement
- Connection to sewer
- Renovation of exterior door and window frames

Lyman Hall

- Classroom renovations
 - LVT flooring
 - LED lights/dimmers
 - Casework replacement
- Reroof
- HVAC replacement/improvements

Martin

- Classroom renovations
 - LVT flooring
 - LED lights/dimmers
 - Casework replacement
- Reroof
- HVAC replacement/improvements
- Renovation of exterior door and window frames

West Hall Middle

- Gymnasium bleacher replacement
- Entrance from McEver Road
- Car rider improvements
- Parking improvements

West Hall High

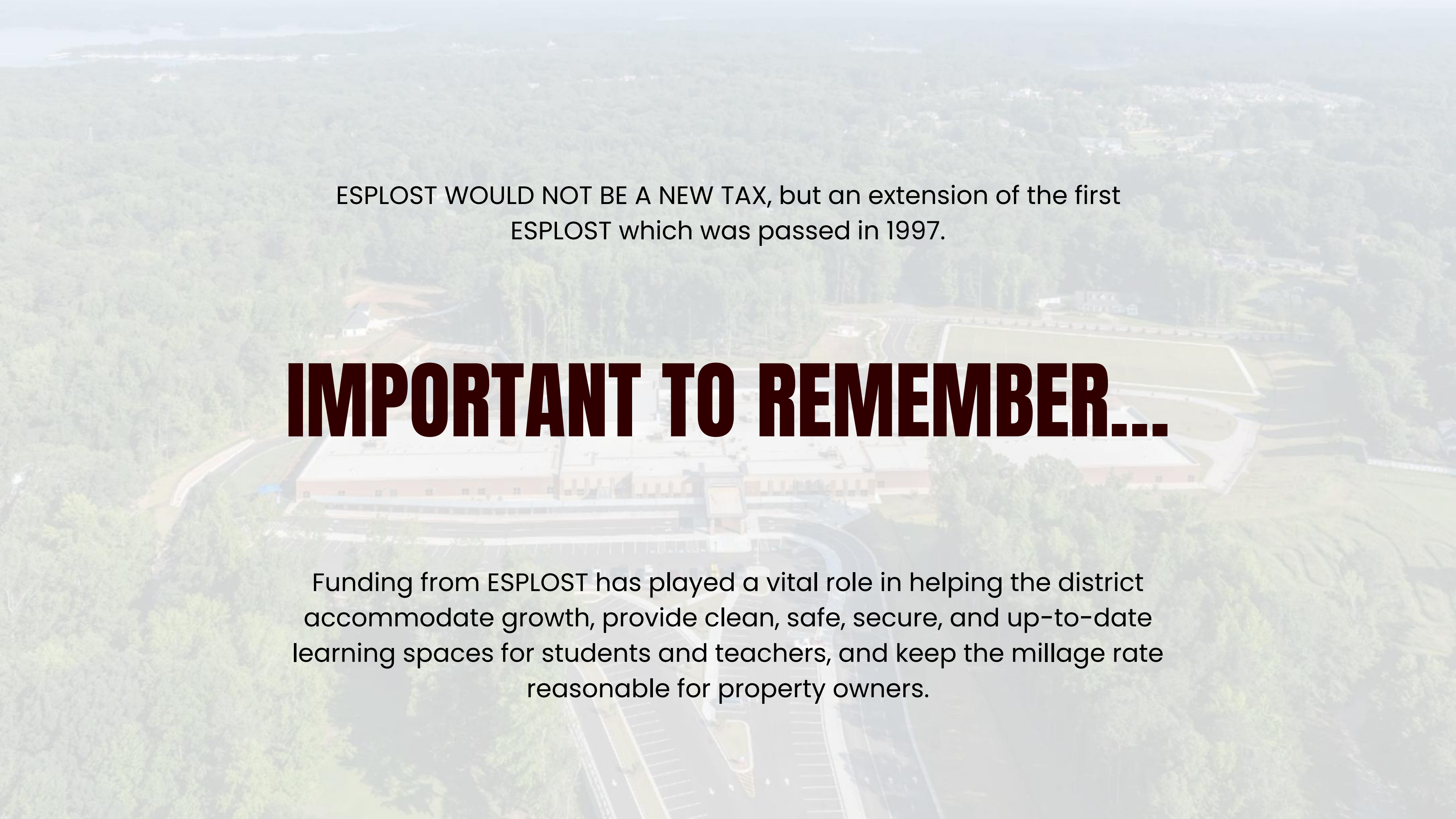
- Stadium
 - LED lighting

LCCA

- Restroom renovations throughout school



*Please note: All projects and figures are estimates based upon our most current and reliable information. Actual projects and estimates may be adjusted based upon changing conditions.



ESPLOST WOULD NOT BE A NEW TAX, but an extension of the first ESPLOST which was passed in 1997.

IMPORTANT TO REMEMBER...

Funding from ESPLOST has played a vital role in helping the district accommodate growth, provide clean, safe, secure, and up-to-date learning spaces for students and teachers, and keep the millage rate reasonable for property owners.

**A PENNY GOES A LONG WAY...
ESPLOST VII WOULD NOT BE A NEW TAX**



**Early Voting Begins April 27, 2026
Election Day: May 19, 2026
esplost.hallco.org**

